

Download Data File

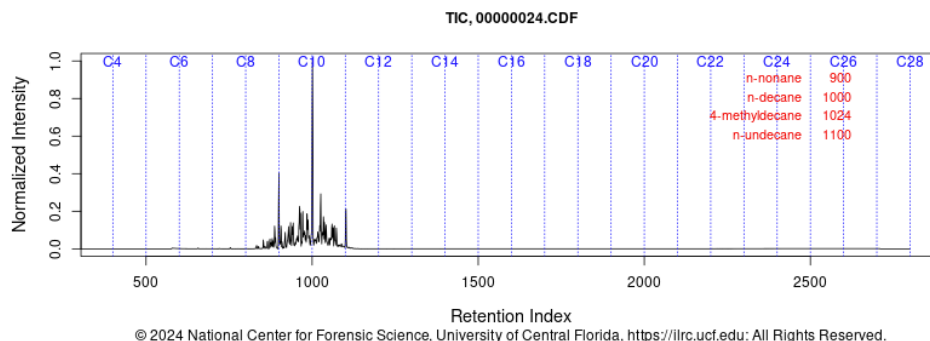
Common Data Format (CDF) is a conceptual data abstraction for storing, manipulating, and accessing multidimensional data sets.

Most mass spectrometry data analysis software has an export function that converts the data from the native file format to the CDF file format. In addition, there is an import function that converts the data from the CDF file format to the native file format of the software.

Select Download CDF

Save CDF

***NOTE: for some reason Microsoft makes the CDF files appear as PDF in the file directory.



Record Details

Field	Value
Classification	Medium petroleum distillate (MPD)
Component Class	N/A
Degradation type	N/A
Extent of Degradation	N/A
Carbon Low	C 8
Carbon High	C 11
Product Use	Charcoal Starter
Profile	Alkanes
Brand Name	Kingsford Odorless Charcoal Lighter (plastic bottle); neat liquid
Major Peaks	n-nonane 4-methyldecane n-undecane n-decane

Chromatograms

Data Files

SDS



National Center for
Forensic Science

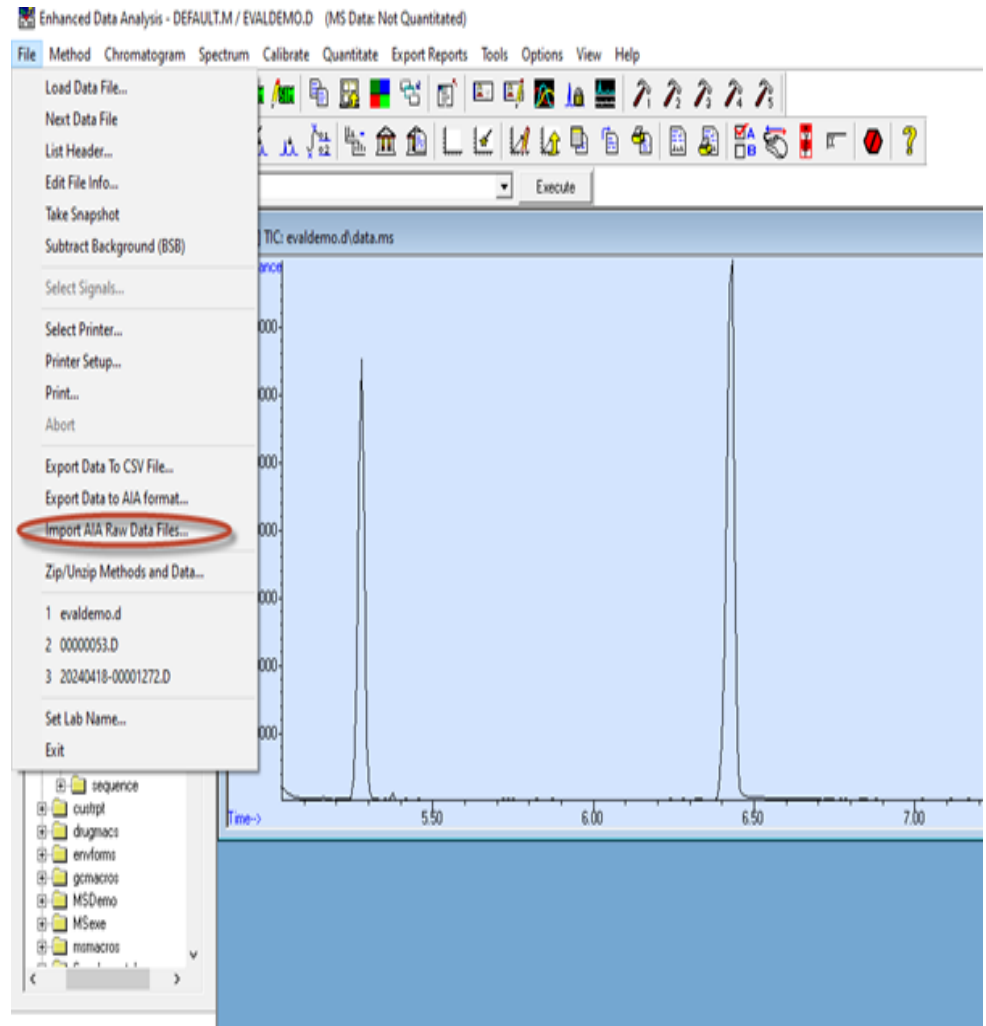
UNIVERSITY OF CENTRAL FLORIDA

Chemstation Import

In Chemstation

Go to File

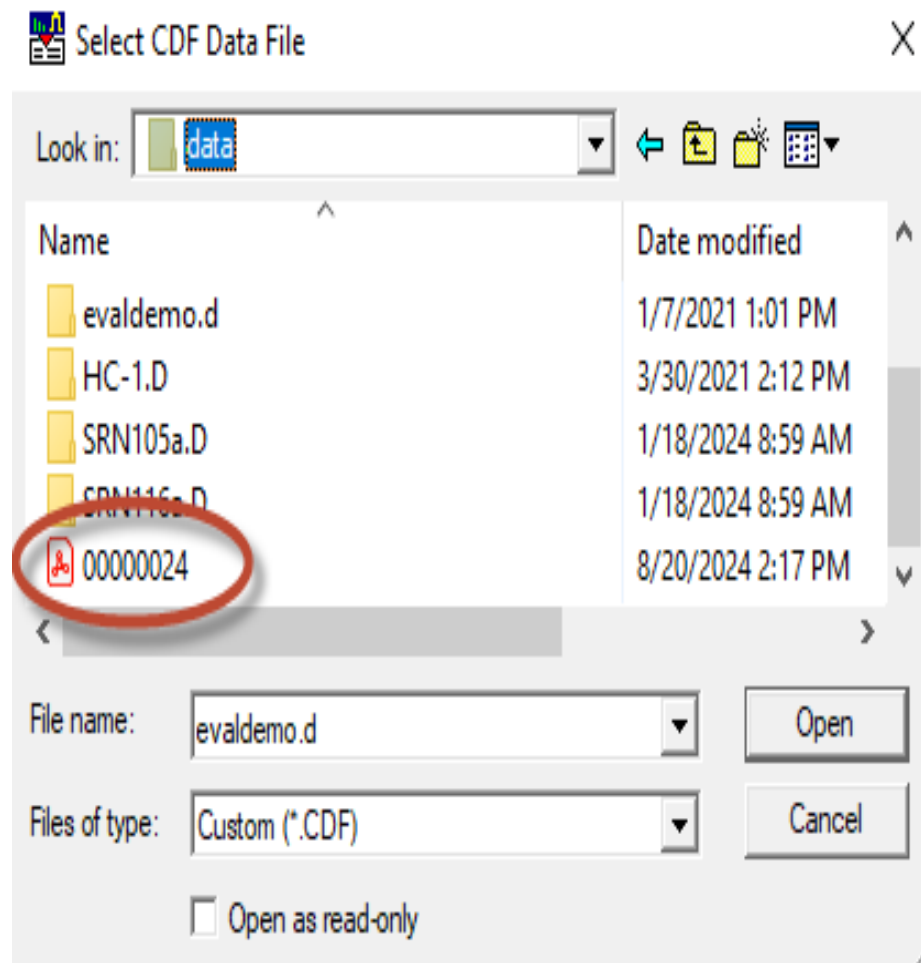
Import AIA Raw Data Files...



Chemstation Import

Select the CDF Data File

Open



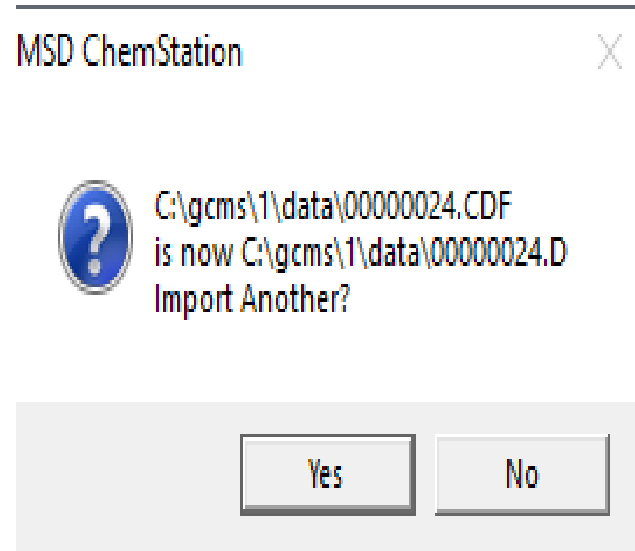
Chemstation Import

Do you want to import more
CDF files?

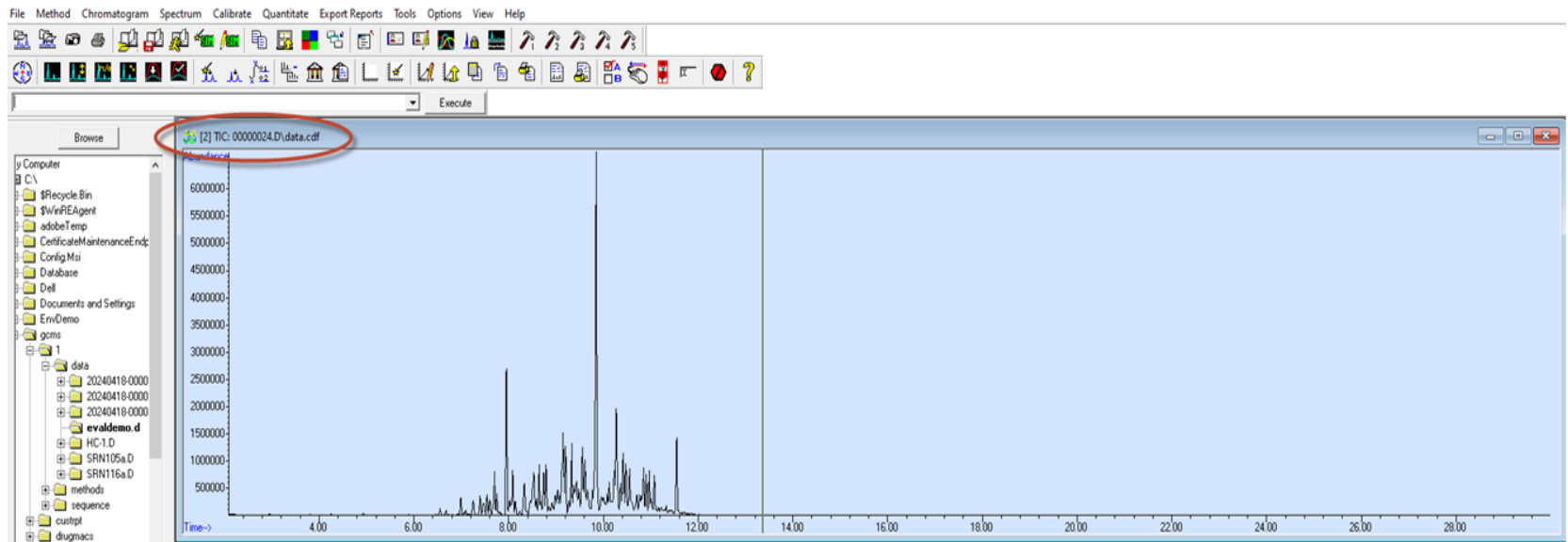
Yes – continues to selecting
more data files to import

When all files are selected:

No – converts the selected CDF
files into separate .D files.



Chemstation



The CDF file is converted to a Chemstation .D file within the same file directory. There will no longer be a CDF file in the file directory.